

## 3 simple things that will make your life easier:

- 1. Everything about us is in the Pathology Website**

The Pathology website is accessible online at: <http://massgeneral.org/pathology>. Here you will find the Lab Handbook, which includes a full listing of the tests that each lab performs, specimen requirements, normal values, and ordering information. There is a section designed especially for setting up research studies, including research rates.
- 2. Narrative interpretations give you more than numbers**

We offer narrative interpretations in most clinical areas. We add value by giving you more than just numbers. Our narratives are patient-specific, not canned comments. Need even more information? Page us for a consultation (see other side).
- 3. Call 4-LABS (x4-5227) anytime to speak with us**

No matter who you want to reach, or what you want to know about clinical testing or pathology consultations, one call to our 4-LABS Hotline (x4-5227) will put you in touch with a person who will help you get the information you need.



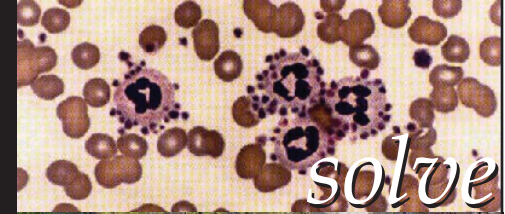
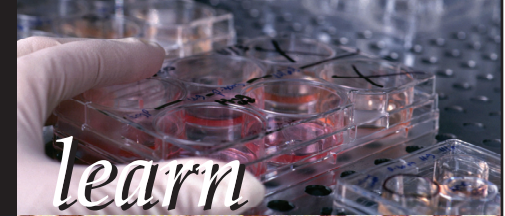
DEPARTMENT OF PATHOLOGY  
55 FRUIT STREET - WRN 225  
BOSTON MA, 02114



PATHOLOGY WEBSITE:  
[HTTP://WWW.MASSGENERAL.ORG/PATHOLOGY](http://www.massgeneral.org/pathology)

MGH LAB HANDBOOK:  
[HTTP://MGHLABTEST.PARTNERS.ORG](http://mghlabtest.partners.org)

## PHYSICIAN SERVICES AT THE MGH DEPARTMENT OF PATHOLOGY



PATHOLOGY SERVICE

[WWW.MASSGENERAL.ORG/PATHOLOGY](http://www.massgeneral.org/pathology)

# Pathology Services for Physicians



## ☞ Pathology Residents Pager List

**Anatomic Pathology Chief Resident: #22305**  
AP Main Number: 617-726-2967  
Cytopathology: 617-726-3980

**Blood Transfusion: Resident #21829, Fellow #24346**  
Information related to blood products (red blood cells, fresh frozen plasma, platelets, plasma derivatives), transfusion reactions, plasmapheresis, autologous and allogeneic donation program

**Chemistry: #21827**  
Information related to serum enzymes (cardiac, hepatic, pancreatic), tumor markers, special testing, interpretation of test results

**Coagulation: #21820**  
Information and consultations related to bleeding and thrombosis

**Hematology: #21828**  
Information and consultations related to peripheral blood smears, hemoglobin electrophoresis, and special testing results

**Hematopathology: #21867**  
Information related to interpretation of bone marrow aspirates and biopsies, lymph node biopsies, slide reviews

**Immunology (Clinical): #21828**  
Information and interpretation of SPEP, urine electrophoresis, and ANA tests

**Microbiology: #21826**  
Interpretation of test results in bacteriology, mycology, virology, molecular diagnostics, mycobacteriology, serology, parasitology

**Toxicology: #21827**  
Interpretation and information regarding toxicology screening (plasma and urine), special testing

**Clinical Pathology Chief Resident: #21825**  
Information regarding interpretive rounds in Clinical Pathology, special testing, laboratory management related issues

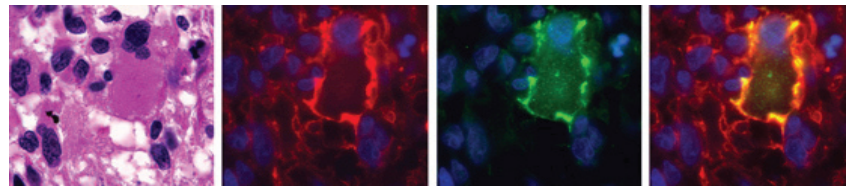
## ☞ Lab Services for Your Convenience

There are several unique services provided by the MGH Pathology Laboratories that you probably have not seen before and you should know about because they will make your life easier.

We have many reflex testing algorithms so that you do not have to keep re-drawing your patient for the next blood test when you receive the results of the previous one. For example, we have a prolonged PTT workup that means you don't have to remember if Factor VII is related to the PT or PTT. Use the algorithms as much as possible and tell us if we need more.

We provide narrative interpretations in a number of areas, so you get more than just the numbers. The narratives are patient specific and not canned comments attached to a certain test result every time.

We have very knowledgeable residents who are happy to help you 24 hours/7 days with issues related to lab test selection and test result interpretation. You can page them



## ☞ Other Services

### Clinical Pathology Consultations

For rapid consultation on all issues related to lab testing. Service available 24 hrs/day, 7 days/week. Request a consultation by paging the CP Chief Resident (#21825).

- Interpretation of results
- Appropriate testing to establish diagnosis
- Special handling of specimens in unusual situations
- Performance of esoteric tests not usually available in the clinical laboratories

through the page operator or call 4-LABS and just ask for the lab resident in the lab to which you sent the sample.

Many residents on a variety of services take an elective in Lab Medicine for 2 weeks, which provides them exposure to all the sign out rounds - coagulation, peripheral blood smear / anemia, toxicology, blood transfusion, and others to get a better sense of what lab tests to select in certain clinical situations and what the test results mean. Contact your department for more information.

Donna MacMillan, Director of Operations, Department of Pathology, is interested in knowing when the lab services can be improved to meet the needs of the physicians in the institution. She is available to answer questions about the labs, and can also arrange for you to take a tour of the labs. She can be reached at 617.726.8887, or at [dmacmillan@partners.org](mailto:dmacmillan@partners.org).

### 4-LABS Laboratory Information Hotline

For Lab Results or Info Call 4-LABS (617) 724-5227

### MGH Laboratory Compliance

For questions regarding ICD-9 codes related to outpatient laboratory tests, call the Lab Compliance Unit at x6-2652.

To learn more, visit our website at [massgeneral.org/pathology](http://massgeneral.org/pathology)